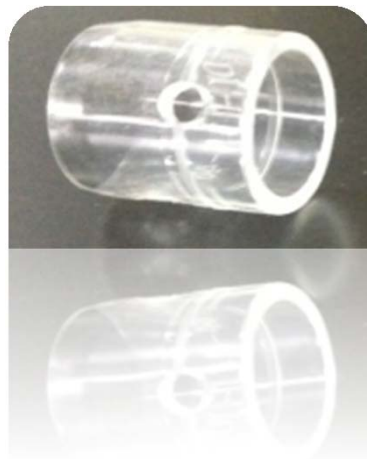


Endoscopic Distal Attachments



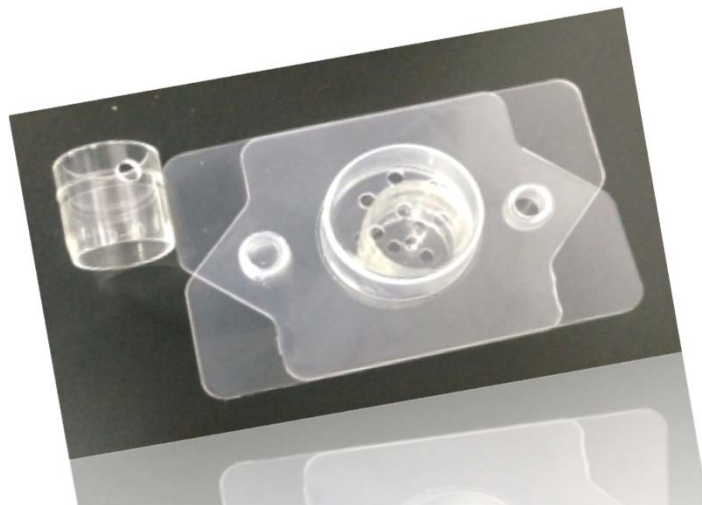
What is Distal Attachments

“Disposable Endoscopic Distal Attachments”

...This device is intended to be use for endoscopic procedure.

“Disposable Endoscopic Distal Attachments” hic

...is designed with bevel end and made of medical macromolecules, E0 sterile for single use.

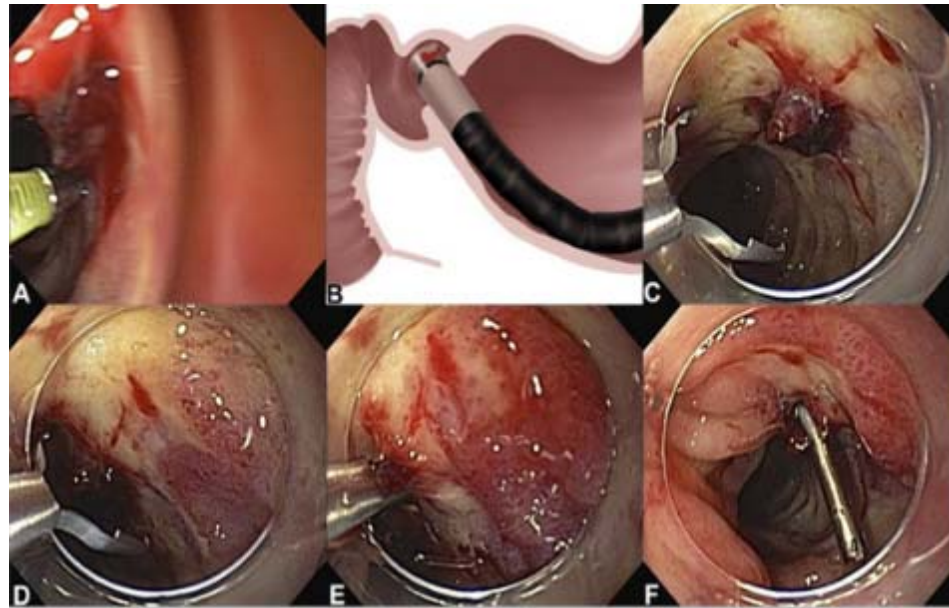


Unique
Presents

Function:

(1) Maintaining good field of viewing

- ◆ Maintaining the good field of viewing of endoscope by keep sure distance between tissue and endoscope lens.
- ◆ Be aware of the distance between tissue and endoscope end.



Function

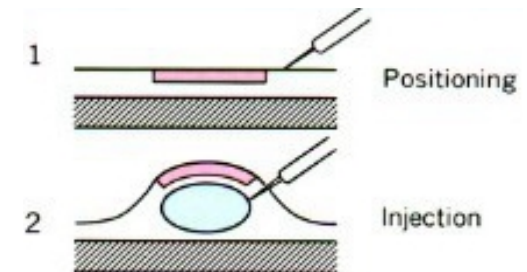


(2) Tissue protection

Avoid the rigid endoscope end injure the human tissue, reduce the risk of tissue damage and provide doctor with good control feeling.

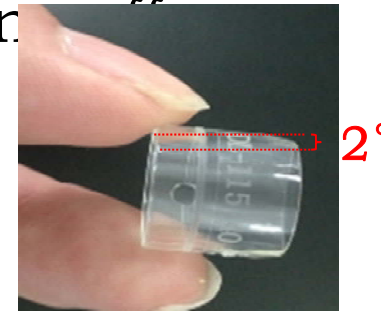
(3) Assistance of surgery

Providing the working space and elivate the bad tissue during ESD, POEM...surgeris.



Features

- ✓ **2° bevel end:** connect to endoscope distal end tightly, avoid coming off



- ✓ **Side hole:** drainage hole for liquid exclude



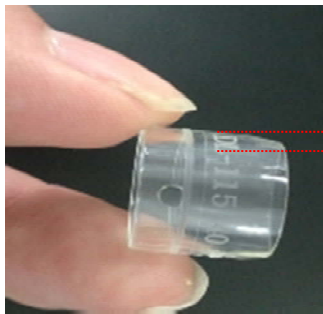
Specifications

Diversified choices for all brands endoscope

ITEM No.	Endo.dia (mm)	Length (mm)	Endo Model
XT-DL-092-40	9.2	4	EG-2790K/EG-2770K
XT-DL-098-40	9.8	4	GIF-Q260/SIF-Q260/GIF-H260
XT-DL-099-40	9.9	4	GIF-Q260J
XT-DL-105-40	10.5	4	PCF-Q260J
XT-DL-108-40	10.8	4	GIF-H260Z/EF-590ZW/EG-450CT5 /EG-2990i
XT-DL-115-40	11.5	4	EG-450D5/EG-3470K/EC-3470MK/FK/LK/EG-3490K/EC- 3490LK/FK/MK
XT-DL-118-40	11.8	4	GIF-2T240
XT-DL-122-40	12.2	4	CF-Q260A/CF-Q260D
XT-DL-128-40	12.8	4	EC-250WM5/WI5/EC-590WM/EC-590ZW/M/EC- 530WM/WI/EC-450WM5/WI5
XT-DL-132-40	13.2	4	CF-H260AL/I/EC-3890TLK/TFK/TMK/EC- 3890Mi/Mi2/Fi/Fi2/Li
XT-DL-148-40	14.8	4	FH260AZL/I

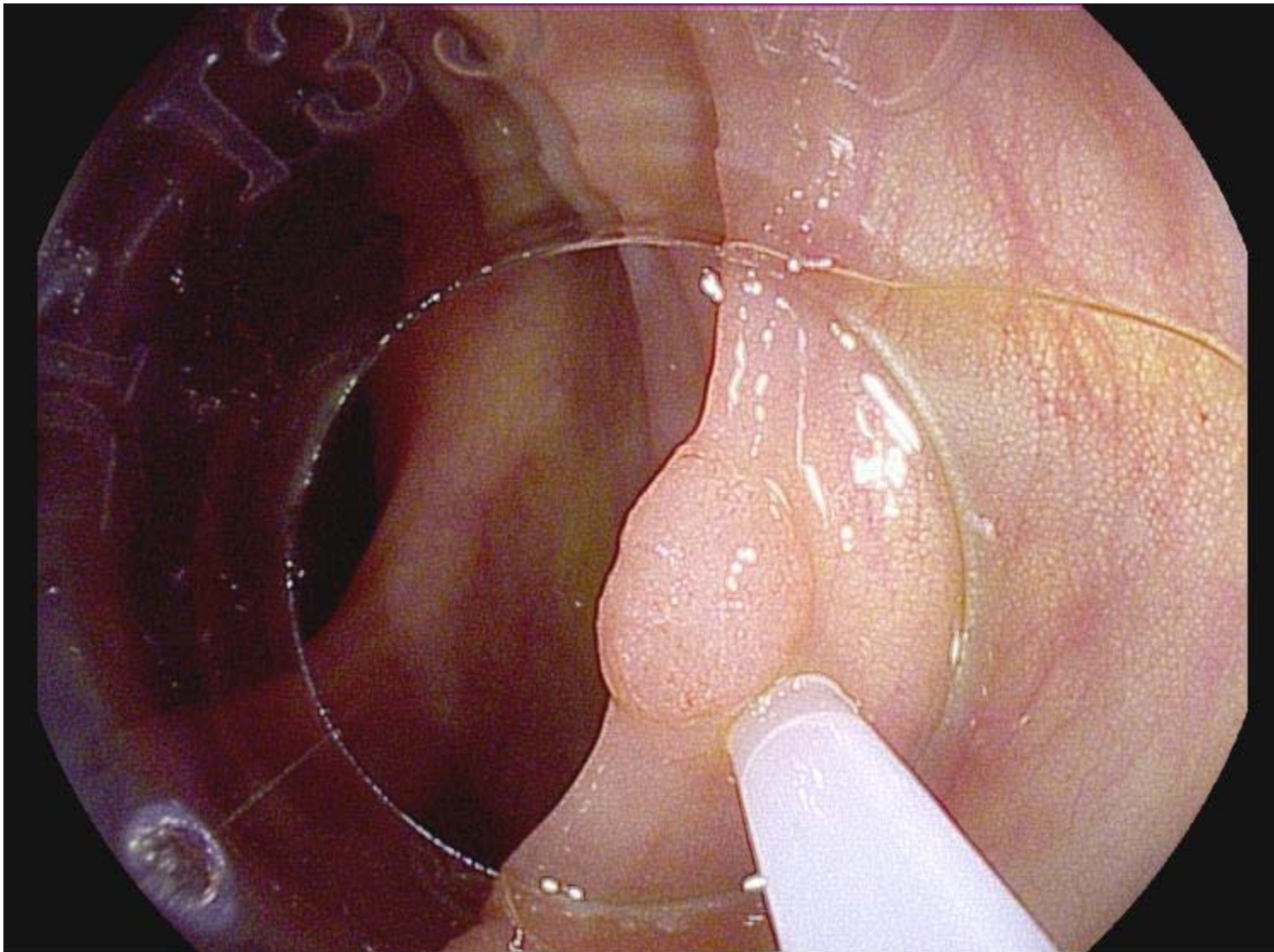
Comparison with Olympus

	Ours	Olympus
Structure	2° bevel end	straight cut end
Hardness (shor)	75	70
Compatibility	all endoscopy brands	only Olympus endoscope
Price (end user)	US\$ 10-15/pc	US\$ 25-40/pc



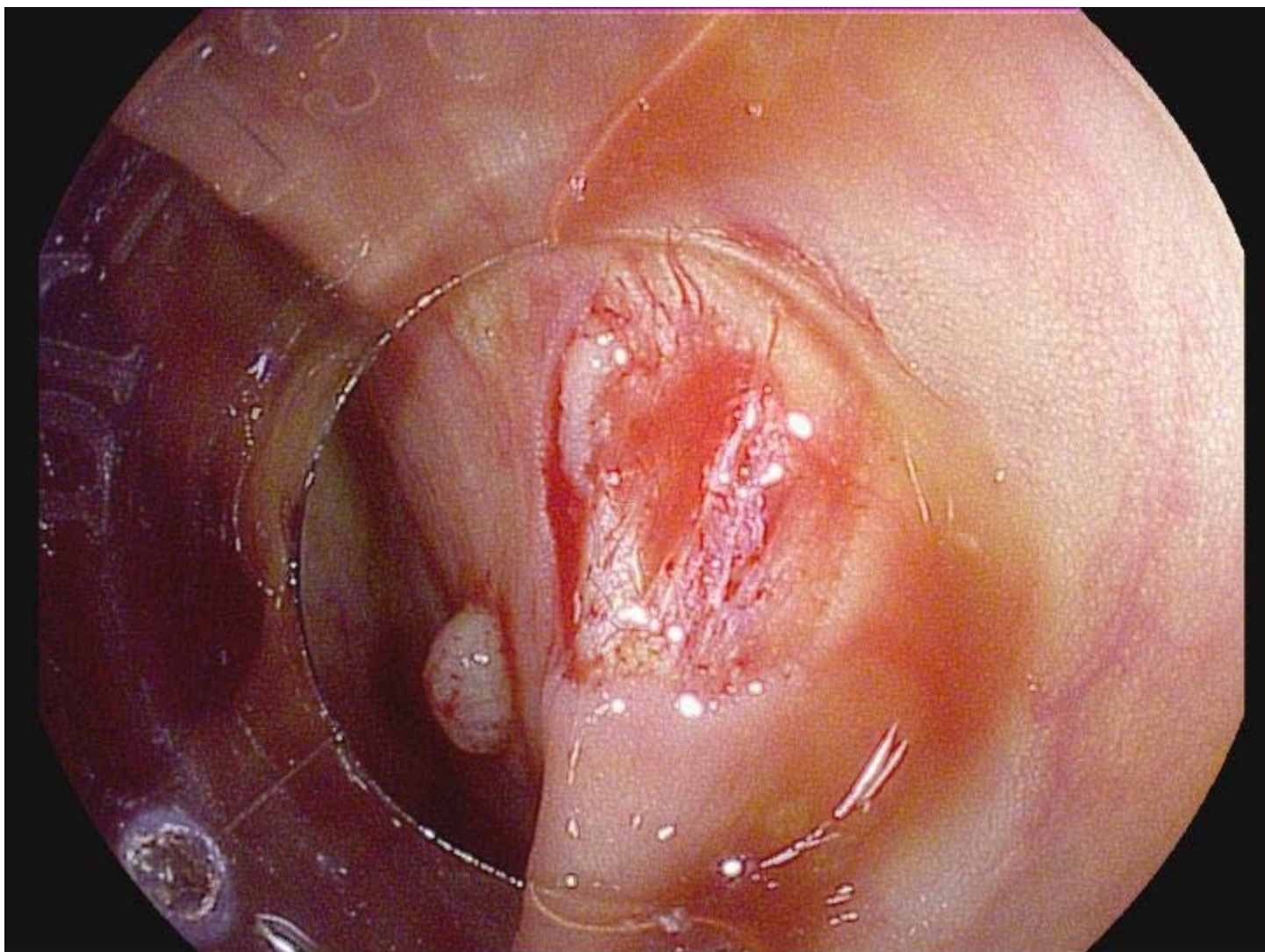
2° This design will reinforce the connection to the endoscope to avoid any risk of coming off.

Clinical Use (EMR ... polyp cutting)



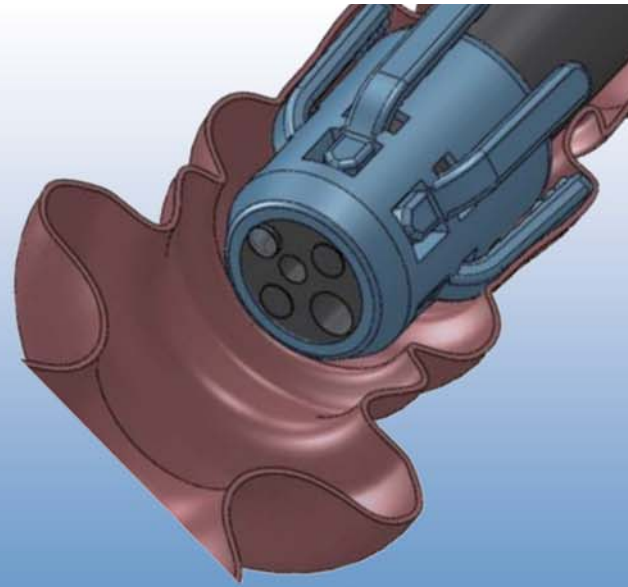
DATE:21/Aug/2015 09:09:54 Doctor:J.LANCASTER
ID:ID NAME:NAME Age:AGE Sex:S
COMMENT:COMMENT
Image Processing Parameter:E=Low SE=+5 CE=+4 TE=OFF NR=Low
Brightness=0,AUTO,AVE R=0 B=0

Clinical Use (ESD)



DATE:21/Aug/2015 08:11:01 Doctor:J.LANGASTER
ID:ID NAME:NAME App:AGE Sex:S
COMMENT:COMMENT
Image Processing Parameter: E=Low SE=15 CE=14 TE=OFF NR=Low
Brightness=0,AUTO,AVE R=0 B=0

*Efficient way to See
what you might miss*



Endo-Wing™

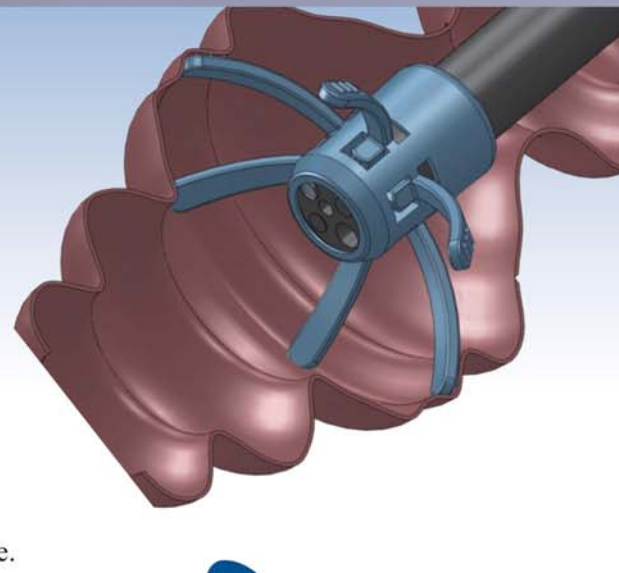


**Disposable Endoscopic
Distal Attachments**

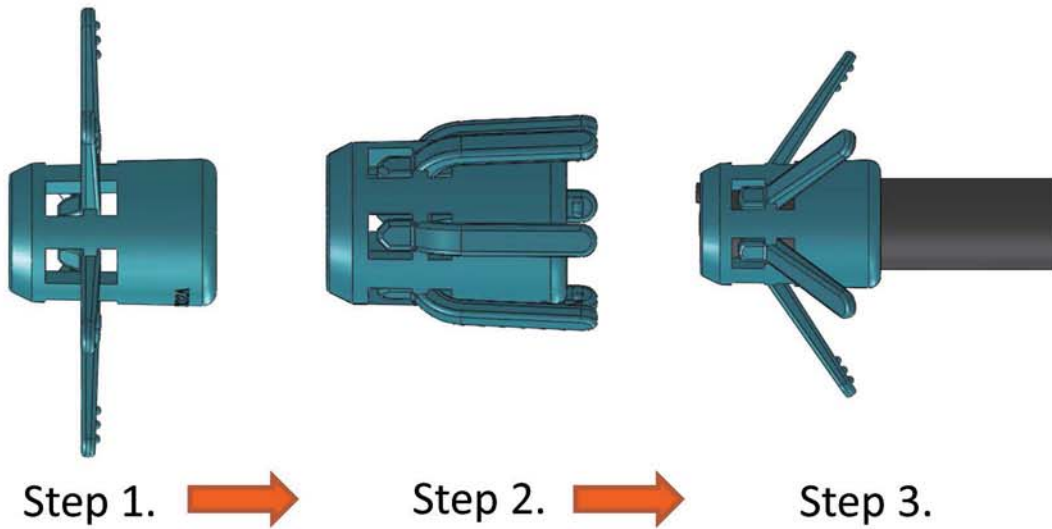


Feature :

- I .Easy to be installed on endoscope tips.
- II .Stretch the colon folds for more positive rate.
- III.Efficient to reach terminal ileum (TI) for observation.
- IV .Convenient to park the endoscope in colonoscopy procedure.



Installation:



Water is the only suggested lubricate media

Step 1. Take out the Endo-Wing product from integrated packing.

Step 2. Hold the flaps back to the attachment in hand.

Step 3. Install the Endo-Wing to endoscope tip slowly until endoscope tip reach the working end.

Ref.No	Distal size	Matching colonoscope	
XT-DL-132W	12.2-13.2mm	Olympus:	CF-HQ290, CF-Q290 series.
			CF-H260, CF-Q260 series.
			CF-Q180, CF-HQ190, CF-H190, CF-V701,CF-Q150 series.
		Pentax:	EC-3830, EC-3870, EC-3890 series
Fujinon:	EC-590, EC-450, EC-530, EC-250, EC-99 series.		
XT-DL-115W	10.5-12mm	Olympus:	PCF-Q260, PCF-H290 series.
		Pentax:	EC-3470, EC-3490 series.
		Fujinon:	EC450MP5, EC-600 series.



Why use capsule endoscope?

- The human alimentary tract is mainly consist of esophagus, stomach, small bowel and large bowel.
- The regular flexible endoscope could only reach duodenum and ileum.
- The regular flexible endoscope has higher risk of perforation to small bowel .
- The capsule endoscope will increase the positive rate greatly and widely accepted with advantages of painless, convenient, noninvasive, no cross infection.

How to use:

1. Fasting 15hours before use for GI preparation
2. Wear the vest with the data receiver
3. Swallow the capsule
4. ensure the capsule pass the pylorus then resume daily life.
5. 13hours later return the receiver to hospital
6. doctor issue diagnosis report

Intended use:

- Obscure GI bleeding, Polyps ;
- Abnormality in small bowel image detecting;
- Chronic abdominal pain & diarrhea;
- Small bowel tumor, obscure iron deficiency anemia;
- Crohn's disease
- GI physical examination;



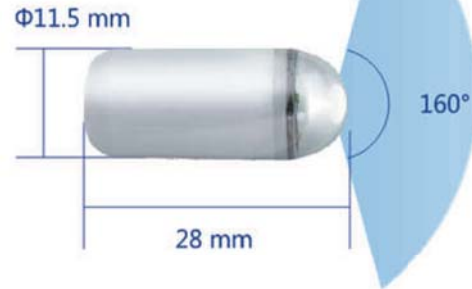
Capsule Endoscopy Systems



The high resolution capsule is consist of camera module, battery and wireless transfer chip which is a disposable product for small bowel diagnosis and screening.



CapsuBot



Physical weight: $\leq 4.4\text{g}$

Material: polycarbonate

Field of view: 160°

Image resolution: 256x256

Frame rate: 2fps

Battery duration: ≥ 13 hrs

(Li-MnO₂)

Voltage: 3 v

Sealing: IPX8

CapsuRec



Size: 135x71x23 mm

Lithium-Ion Battery

Voltage: 3.7v

Duration: ≥ 14 hrs

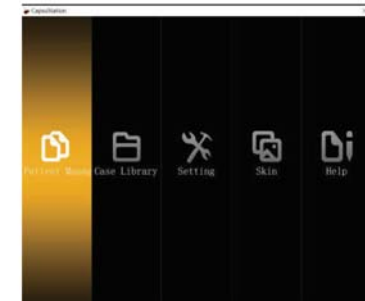
Storage: SD Card (8 GB)

Battery capacity: 5000mAh

Weight: 310g \pm 10g

Vest antennas: 8 pcs

CapsuStation



Compatible with:

Windows XP,

Windows 7,

Windows 8,

Windows 10;

Easy installation

Very efficient experience



Disposable valve kit

(Exclusively suitable for all Olympus endoscope models)

Model:EW201801-DVK-A

ENDOSERVICE disposable endoscope air/water suction & biopsy valve provides more safety and infection control for each endoscope procedure.

Product contents: air/water button 1pc, suction button 1pc, biopsy valve 1pcs

all product design and produce under SGS test and approval



Saving the cost and time for cleaning.

Reducing the risk of cross infection.

Quick and reliable use for each endoscope procedure.



Qualified with CE and ISO 13485. We are dedicated in creating and developing good experience for all endoscope procedure.

With current strong global network of distribution we expect to make more convenience and efficiency to GI field.



Models	Contents	Q'ty/pack
EW201801-DVK-A	ENDOSERVICE a/w suction & biopsy valve kit	50sets
EW201801-DVK-A-1	ENDOSERVICE a/w suction buttons	50sets
EW201801-DVK-A-2	ENDOSERVICE disposable biopsy valve	100pcs

MULTI - BAND LIGATOR

INDICATIONS

Used for ligating esophageal varices combined with Endoscope.

TECHNICAL AND FUNCTIONAL FEATURES

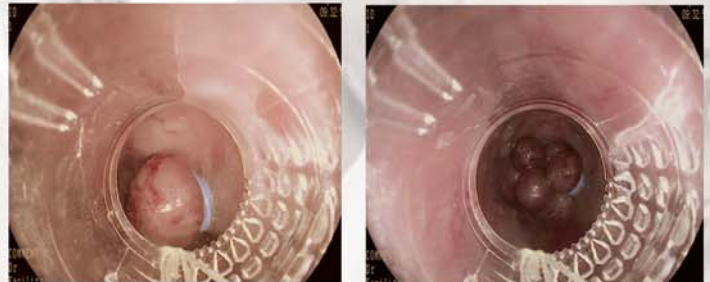
- Post installation of the bands makes the field clear
- Precise ligation, obvious release resistance, easy to operate
- Multi-bands design achieves to treat several points in one operation
- Medical rubber material with good biocompatibility and physical property
- Humanized handle design make operation more easy and comfortable
- Bands release reminds by feeling and sound
- Different code color ring for quick identification of the last shot
- Square shape cross section design make ligation stronger and safer



Excellent filed & aspiration effect



Single & multiple variceal ligation



SPECIFICATIONS

Model	Band No.	Trigger Cord
BL18-7A	7	1.3mm
BL18-9A	9	1.4mm

